



31st March 2023

Dear parents and carers,

What a wonderful end to our Spring term! The children have worked exceptionally hard and have thoroughly enjoyed all aspects of their learning.

Last week, our KS2 children showcased their **creativity** through their designs in the 'egg decorating competition'. Here are a few of the **creative** designs.



Clubs

We are really excited that our life experience clubs are starting after the Easter holidays. All clubs run from 3:10pm until 3:40pm. If you child has been allocated a place you will have been notified by text message. To secure your place, please make payment before the first session starting. Please note that if payment is not received then the place will be offered to the next child on the list.

Conjunctivitis

We have seen an increased number of cases of conjunctivitis in school. Please remember that children are still able to attend school with conjunctivitis however, it's important to make sure your child is doing regular hand washing to reduce the likelihood of spreading.

Weekly Attendance

27 March – 31 March 2023

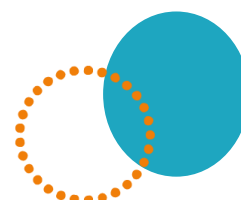


EYFS	Heeley	92.6%
EYFS	Whirlow	93.5%
Y1	Sheaf	93.3%
Y1/Y2	Endcliffe	98.1%
Y2	Norfolk	95.5%
Y3	Crucible	90.4%
Y3	Lyceum	89.2%
Y4	Kelham	92.5%
Y4	Weston	91.7%
Y5	Millennium	92.3%
Y5	Graves	95.6%
Y6	Bolsover	94.6%
Y6	Peveril	88.2%
Y3/Y6	Shirebrook	91.4%
Whole School Attendance		92.9%

Well done to Endcliffe class for achieving our school target of 96%

At Birley Spa Primary Academy we are committed to helping all pupils to achieve their full potential. Good attendance is a key factor in raising pupils' attainment and supporting their personal development. Whilst it is appreciated that children are ill from time to time, please think carefully before allowing your child to be absent from school. The chart below provides an indication of how just a few days absence can significantly impact a child's overall attendance percentage and impede their learning:

Description	Attendance	Whole Days Lost	Lost Hours of Learning
Excellent	100 – 99%	0 – 2	0 – 10
Good	98 – 96%	4 – 7.5	20 – 37.5
Requires Improvement	95 – 91%	9.5 – 17	47.5 – 85
Persistent Absentee	90 – 86%	19 – 27	95 – 135
Critical	85 – 80%	28.5 – 38	142.5 – 190



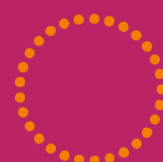
STAR OF THE WEEK

27th – 31st March 2023

Heeley	Carter – Being resilient and coming into the classroom independently.	Mckenzie – Being resilient and coming into the class independently.
Whirlow	Louie – being a resilient learner and an important member of the class.	Sebastian – His endeavour in learning letter sounds and using them in reading.
Sheaf	Amelie – Showing hard work and resilience when writing your own version of 'Lila and the secret rain'.	Logan – Showing endeavour and teamwork , and always helping his friends in their learning.
Norfolk	Evie- Rose – Being an aspirational learner everyday! You always strive to achieve your best.	Darcy – Being a great team player, and collaborating so that everyone can achieve their best.
Endcliffe	Maddison – Showing aspiration . Maddison has been coming to school on time with a smile and making the most of her lessons.	Finley – Showing creativity . Finley has made up his own version of our class story and was brave enough to retell it in front of the class.
Lyceum	Caelan – Aspiring to do your best handwriting when publishing your independent write. You have shown endeavour with your presentation and it made me smile to see you so proud of yourself.	Jax – Resilience , sometimes you find the work a bit tricky but you never give up. You have a great attitude to learning and made me smile to see you proud of your full page of writing.
Crucible	Lukas – Aspiration , always working extremely hard in all lessons. Lukas is always answering Class questions and always participating in class learning to achieve his best.	Jayden – Showing resilience with his handwriting, while Jayden has been asked to rewrite some of his work he always has a positive attitude.
Weston	Golnoush – Having a positive attitude and joining in with group discussions in reading.	Ollie – Showing aspiration by reading regularly at home.
Millennium	Connor – His creativity and teamwork during music lessons where he created his own lyrics to our Class song	Rylan – His endeavour and resilience with his English writing. Keep up the good work.
Bolsover	Dougie – Producing a letter all around the idea of being more sustainable in school. Mrs. Gibson really enjoyed reading it.	Kayleigh – Showing aspiration this week in English. You have written a great balanced argument using Year 6 grammar features.
Peveril	Destiny – Demonstrating great resilience and teamwork to overcome challenges in her learning.	Soroush – Showing great aspirations and endeavouring to be the best Mathematician he can be.
Shirebrook	Logan – Creativity - Logan has created his own story with a scene and characters. This week we have filmed the story too.	

Dates for the Diary

31 st March	Last Day of Term
3 rd – 14 th April	Easter Holidays – School Closed
17 th April	Inset Day – School Closed
26 th April	KS1 Visit to Butterfly House
1 st May	Bank Holiday – School Closed
4 th May	Y5/Y6 Coronation Disco – 4pm – 5pm
8 th May	Bank Holiday – School Closed
9 th May	Y1/Y2 Coronation Disco – 3:15pm – 4:15pm
9 th May – 12 th May	SATS Week – Y6
11 th May	Y3/Y4 Coronation Disco – 4pm – 5pm
15 th – 19 th May	SATS Week – Y2
29 th May – 2 nd June	Half Term – School Closed
5 th June	Inset Day – School Closed
9 th June	Y6 Crucial Crew Visit
12 th – 18 th June	Phonics Assessment Week
16 th June	Father's Day Celebrations
19 th June	Father's Day Celebrations
21 st – 23 rd June	Y6 Residential to Kingswood
3 rd July	Enterprise Week
11 th July	Sports Day – Y1 & Y2 / Y3 & Y4
12 th July	Sports Day – EYFS
13 th July	Sports Day - Y5 & Y6
14 th July	Reports Sent Home
17 th July	Summer Fayre
21 st July	Whole School Family Picnic
21 st July	Last day of term



Community Events

New Phoneline for 0-5 SEND
Support Service available
from 20th March 2023



A dedicated 0-5 SEND phoneline will be open every Monday, Wednesday and Friday from 13:00-16:00 - term time only.

This service will be operated by the Early Years Inclusion Teachers. Parents and professionals are welcome to use this service.

Please call 0114 2037773.