

Just a reminder the World Book Day is 2nd March 2023. As previously communicated children are welcome to wear bought costumes, however, to keep costs to a minimum we would love to see as many as possible home made costumes. The learning during the day will be based around different books.

We will also be holding a book swap, so if you have a good quality book which your child no longer reads, please bring this into school to swap for another book.

Pupil Voice

This week members of our pupil voice along with Mrs Gibson and Miss Calvert went to Charnock Hall Primary School to meet with children from other L.E.A.D. Schools to gain a greater understanding of their roles and responsibilities within the community. Our wonderful representatives will be holding an assembly to show how they get on.

Breakfast & Afterschool Club

Please see below the new timetable for our breakfast and afterschool club which commence on Monday 27th February.

If your child would like to attend, please book their place via the School Comms Gateway App.

If you have any problems please contact the school office for assistance.

Monday	Dodgeball
Tuesday	Football
Wednesday	Basketball
Thursday	Gymnastics/Dance
Friday	Multi Sports

Safeguarding

As part of our commitment to keep children safe, the use of mobile phones, smoking, vapes and dogs are not permitted on the school site. Please support us by adhering to our policies.

Please can we remind you that scooters and bikes should not be ridden on the school grounds. If you do leave a scooter/bike on the school grounds please make sure that when collecting you take the correct one Please remember that any scooters left on site are at your own risk.

Mrs Gibson & Mrs Pemberton

Weekly Attendance

21st - 24th February 2023

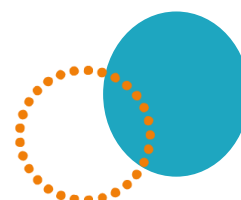


Heeley	99.2%
Whirlow	93.9%
Sheaf	93.3%
Endcliffe	83.9%
Norfolk	100%
Crucible	94.0%
Lyceum	95.8%
Kelham	98.2%
Weston	100%
Millennium	91.8%
Graves	95.5%
Bolsover	89.7%
Peveril	95.8%
Shirebrook	84.8%
Total	94.6%

We are absolutely delighted with this week's attendance- a huge well done to Heeley, Norfolk and Weston whose attendance means that every opportunity to learn has been taken. We're looking forward to seeing each class get higher and higher scores as the term goes on.

At Birley Spa Primary Academy we are committed to helping all pupils to achieve their full potential. Good attendance is a key factor in raising pupils' attainment and supporting their personal development. Whilst it is appreciated that children are ill from time to time, please think carefully before allowing your child to be absent from school. The chart below provides an indication of how just a few days absence can significantly impact a child's overall attendance percentage and impede their learning:

Description	Attendance	Whole Days Lost	Lost Hours of Learning
Excellent	100 – 99%	0 – 2	0 – 10
Good	98 – 96%	4 – 7.5	20 – 37.5
Requires Improvement	95 – 91%	9.5 – 17	47.5 – 85
Persistent Absentee	90 – 86%	19 – 27	95 – 135
Critical	85 – 80%	28.5 – 38	142.5 – 190



STAR OF THE WEEK 21st – 24th February

Heeley	Bentley-Jay – Aspiration and Creativity in numeracy when exploring how to make numbers in different ways.	Paisley – Creativity and Resilience in numeracy this week when making 9 in different ways.
Whirlow	Viena – Her kindness and Empathy towards her friends and her positive attitude to learning.	Bobby – His Teamwork when building and becoming such a valued part of the Whirlow team.
Sheaf	Eli – Showing Endeavour and always having a positive attitude when faced with a challenge.	Theo – Showing Creativity within your learning when considering the opinions of others.
Norfolk	Lillie – working hard in all her phonics lessons and showing great enthusiasm.	Dexter – Writing expanded non phrases to describe an image. Well done !
Endcliffe	Alice – Showing Endeavour and Teamwork , always being ready to learn and help her friends in their learning.	Ezra – Showing Resilience in his learning by not giving up even when he is finding the task tricky resulting in steady improvement.
Lyceum	George – Returning to school with a positive attitude towards work. You have Aspiration to do your best I all your learning and confidently contributed to class discussion.	Oliver – Showing all the school values in your first week at Birley Spa, You are a pleasure to teach and you are always doing the right thing and working hard. Well done !
Crucible	Archie – Aspiration , You try your best in every lesson and aspire to show your very best work.	Caitlin – Showing determination to do her best and achieving her personal targets.
Weston	Ollie – Showing Endeavour and Resilience in maths challenges.	Golnoush – Showing Endeavour and Resilience in new Maths challenges.
Kelham	Tyler – Showing Resilience when completing division calculations, increased accuracy when working using the standard method.	Lucia – Resilience in Maths, keeping going, not giving up and improving skills in multiplication and division.
Graves	Jorja – Being a star pupil as always and for consistently showing all of the school values.	Keavy – Her constant Resilience in her Maths work and for showing empathy to her class mates even when not feeling 100% herself.
Millennium	Lottie – Showing Aspiration in all areas of the curriculum, especially Maths. You have really worked hard this week.	Jaiden – Showing Resilience in all of his work, but especially in Art. Keep up the good work.
Bolsover	Mia – Having a positive attitude in every lesson. You are a brilliant role model in class !	Daisy – Using great Teamwork skills in Math's this week. Well done for also being confident in front of your peers.
Peveril	Jaya – For having a positive attitude when faced with extra challenges in maths.	Maddison – For showing great aspiration in maths to push and challenge herself.
Shirebrook	Kian – Resilience and Endeavour . Kian has shown a great attitude towards learning.	

Dates for the Diary

2 nd March	World Book Day (Dress as recognised character of a book)
10 th March	Halle Concert – Key Stage 2
23 rd March	Easter Fayre
27 th March	Meet the Teacher – New Topics
28 th & 30 th March	Parents' Evening
31 st March	Easter Service at Spa View Church
3 rd – 14 th April	Easter Holidays – School Closed
17 th April	Inset Day – School Closed
1 st May	Bank Holiday – School Closed
8 th May	Bank Holiday – School Closed
9 th May – 12 th May	SATS Week – Y6
15 th – 19 th May	SATS Week – Y2
29 th May – 2 nd June	Half Term – School Closed
5 th June	Inset Day – School Closed
9 th June	Y6 Crucial Crew Visit
12 th – 18 th June	Phonics Assessment Week
3 rd July	Enterprise Week
11 th July	Sports Day – Y1 & Y2 / Y3 & Y4
12 th July	Sports Day – EYFS
13 th July	Sports Day - Y5 & Y6
14 th July	Reports Sent Home
17 th July	Summer Fayre
21 st July	Whole School Family Picnic

